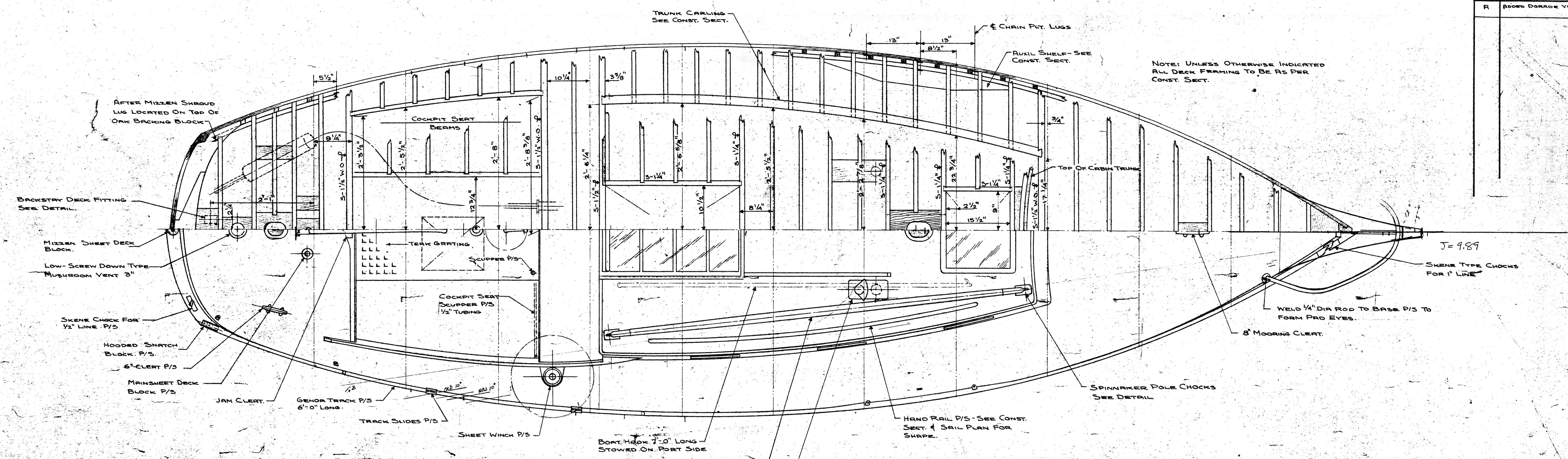


NO	ALTERATION	DATE
R	ADD DORADE VENTS	11 MAR 57



NOTE: UNLESS OTHERWISE INDICATED ALL DECK FRAMING TO BE AS PER CONST. SECT.

J=9.89

SHAKE TYPE CHOCKS FOR 1\"/>

WELD 1/4\"/>

8\"/>

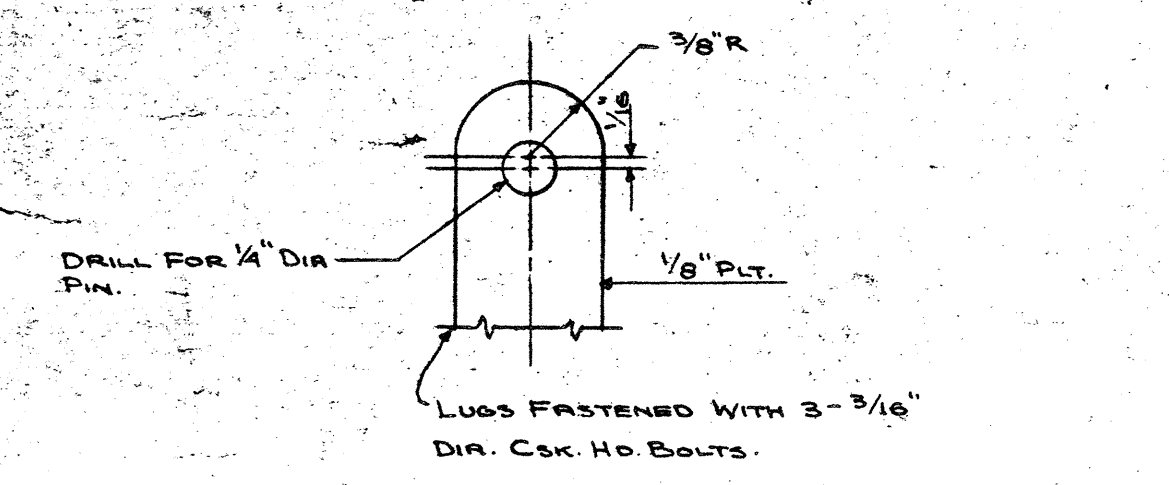
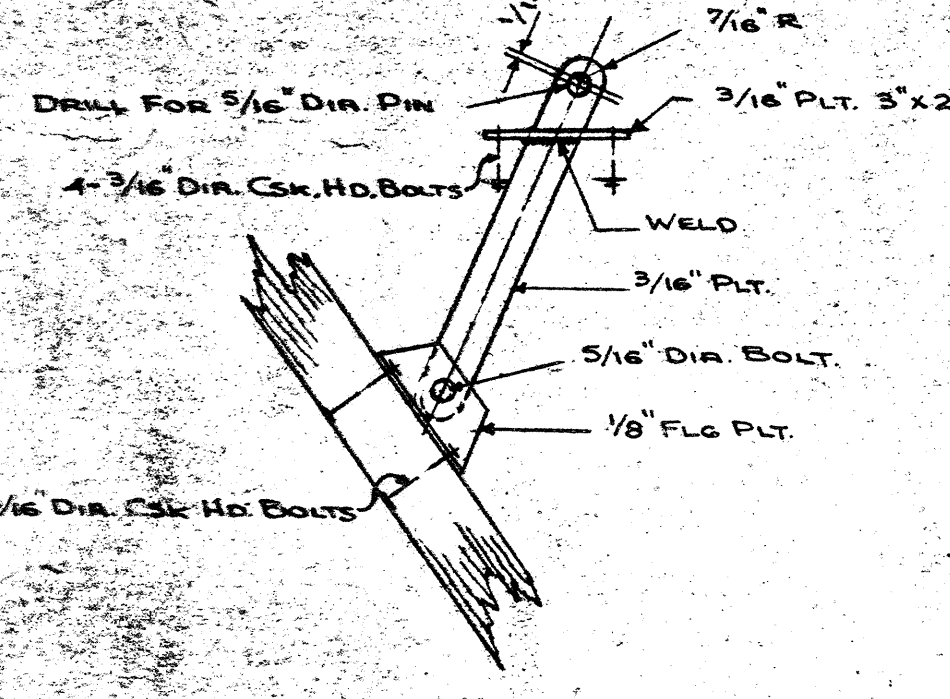
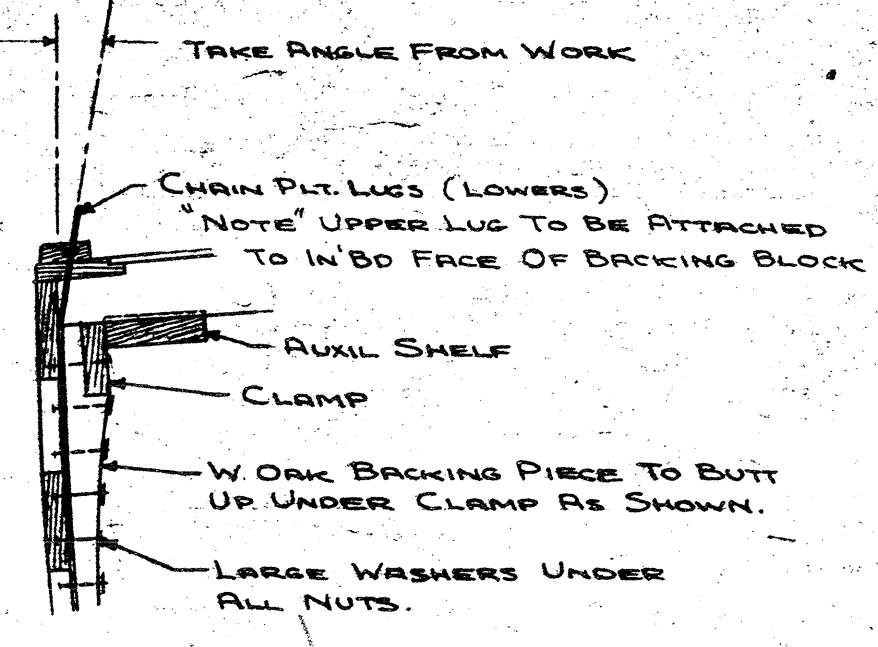
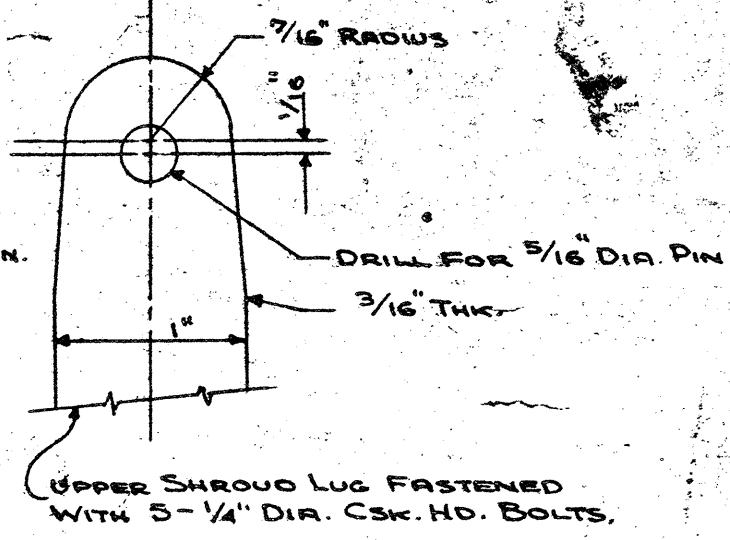
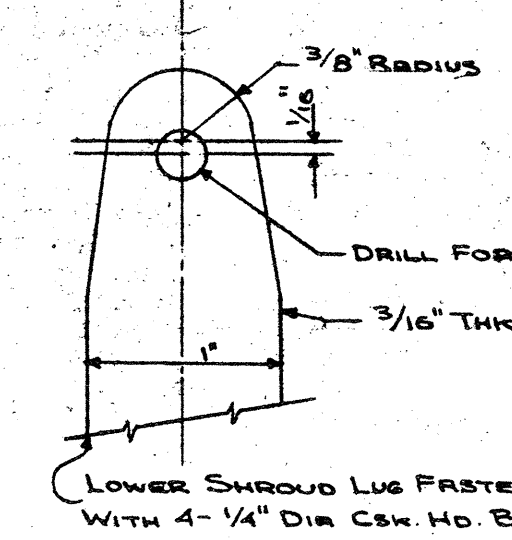
SPINNAKER POLE CHOCKS SEE DETAIL

HANG RAIL P/S SEE CONST. SECT. # SAIL PLAN FOR SHAPE.

BOLT HOOK 7\"/>

SPINNAKER POLE STOWED ON STBD SIDE.

DORADE VENTS P/S SEE DWG NO 24-15



DISTANCE FROM DWL TO TOP OF COCKPIT CABLING IS AS FOLLOWS

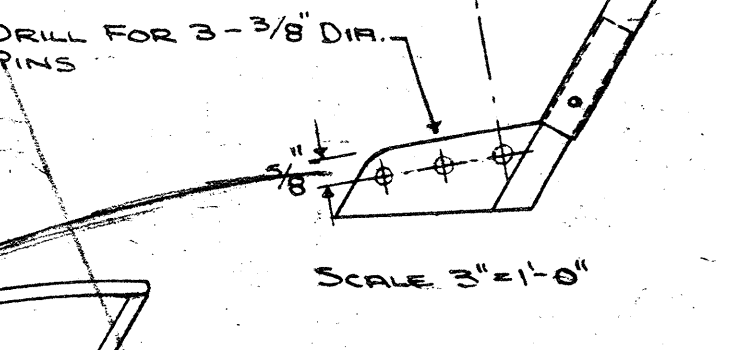
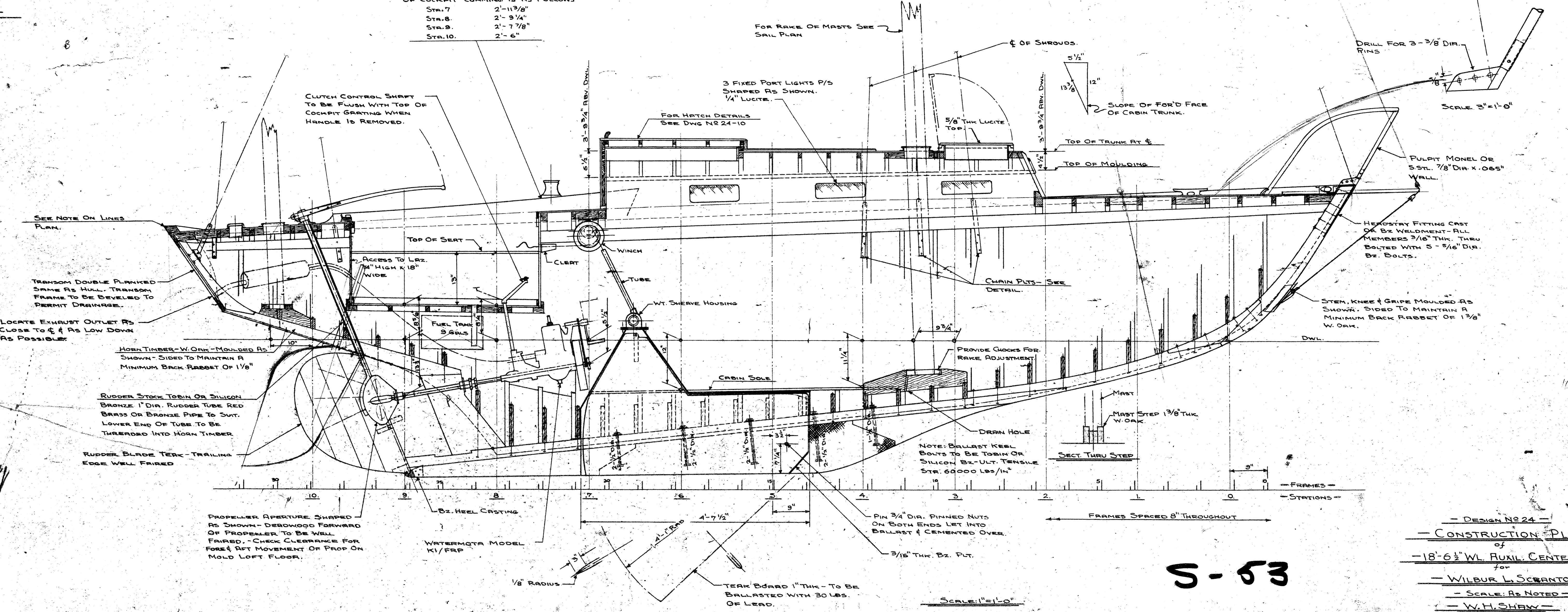
STA. 7	2'-11 3/8"
STA. 8	2'-9 1/4"
STA. 9	2'-7 7/8"
STA. 10	2'-6"

BACKSTAY LUG. SCALE 3\"/>

MIZZEN CHAIN PIT LUG HEAD DETAIL. SCALE: FULL SIZE

MAIN CHAIN PIT LUG HEAD DETAILS. SCALE FULL SIZE.

TYPICAL CHAIN PIT INSTALLATION. SCALE 1/2\"/>



PULPIT MONEL OR 5\"/>

HENDRICK FITTING CAST OR BZ WELDMENT - ALL MEMBERS 3/16\"/>

STEM, KEEB & GALLE MOULDED AS SHOWN. SIDED TO MAINTAIN A MINIMUM BACK RABBIT OF 1/8\"/>

NOTE: BALLAST KEEL BOLTS TO BE TORIN OR SILICON BZ-ULT. TENSILE STR. 60000 LBS/IN<sup>2</sup>

FRAMES SPACED 8\"/>

PROPELLER APERTURE SHAPED AS SHOWN - DEBWOOD FORWARD OF PROPELLER - CHECK CLEARANCE FOR FORE & AFT MOVEMENT OF PROP ON MOLD LOFT FLOOR.

WATERMOTA MODEL K1/FRP

TEAK BOARD 1\"/>

SCALE: 1\"/>

Lat plane = 2.85  
Roller = 2.25

S-53

DESIGN NO 24  
CONSTRUCTION PLAN  
18-6 1/2 WL AUXIL CENTER BD YAWL  
WILBUR L SCRANTON JR  
SCALE: AS NOTED  
W.H. SHAW  
108 SYLVAN KNOLL RD STAMFORD CONN  
1 NOV 56 WHS DWG NO 24-4-ALT B